

Workplace  
Thinkers  
& Makers™

# Working Together

Peldon Rose

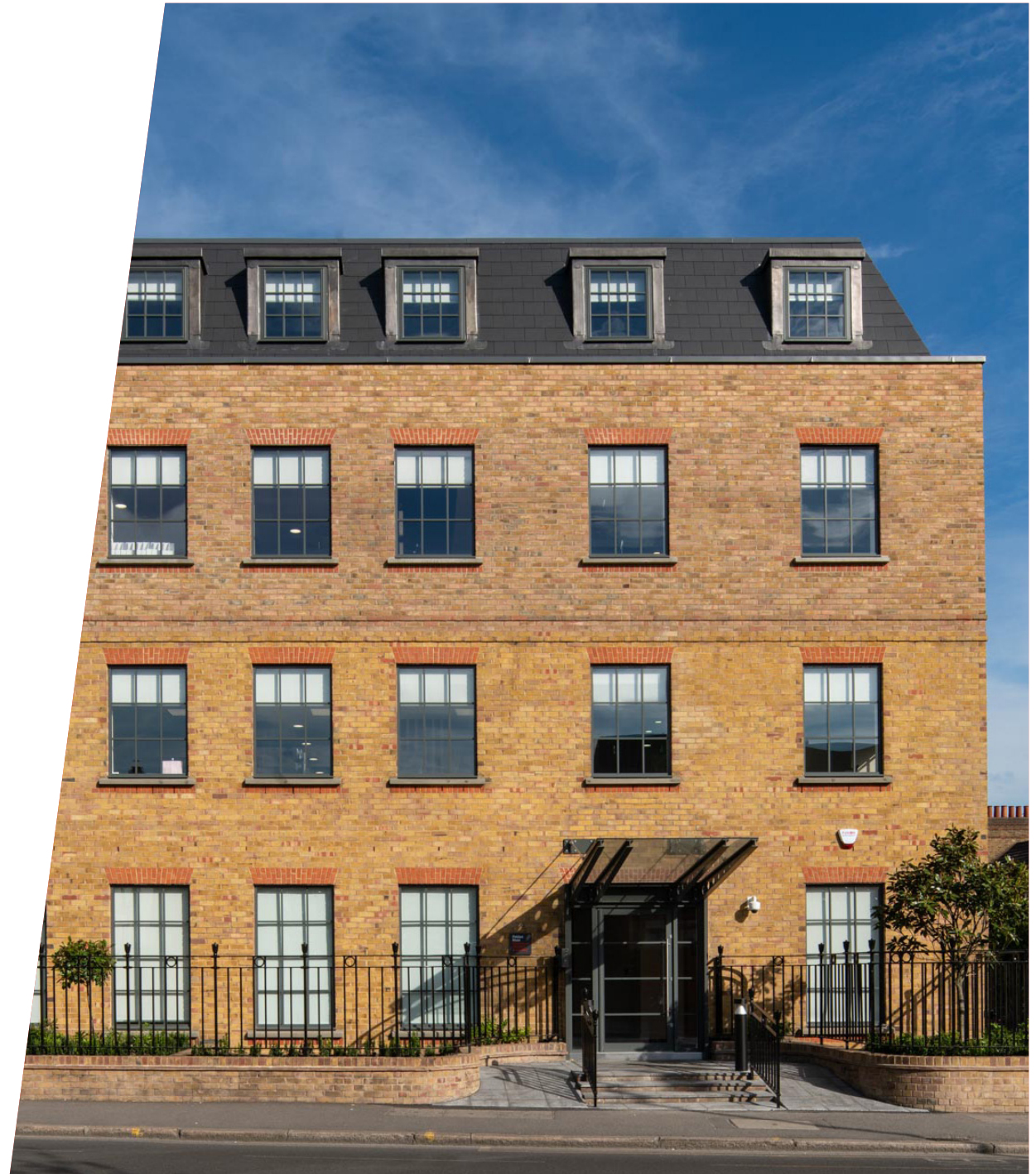




# Who are Peldon Rose?

**We are workplace strategists, design and build experts.**

Our integrated team of specialists share the same objective: to transform offices for the benefit of people and business.





# Why the workplace matters

**The line that once separated work and life no longer exists.**

The way we view a work/life balance is now all about integration and making that work for you and your team.

Your workspace needs to enhance both life in the office, and at home.

We know it's not easy at the moment. You need to re-engage your workforce and improve business performance. Now, more than ever, the workplace has a central role to play in supporting your company's culture and bringing people together.

It's a destination for community, collaboration, innovation and elevating wellbeing.

But your workplace needs to evolve and that means a fresh way of thinking to meet the challenges of today and to help you build success for the future.



**Peldon Rose,  
Wimbledon**

# About Peldon Rose

**Whether you're looking for a new workspace for you and your team, a flexible space for tenants to fall in love with, or you want a deeper understanding of how to get the most out of your office, we are here to help.**

We believe that everyone deserves a good worklife, one enriched with quality, community and joy - both in the office and at home. We know that people build success and we are passionate about working with you to create a workplace that supports this.

We combine knowledge and experience, creative thinking and commitment to bring a fresh and innovative approach to every project. We take the time to listen to what you want and need to create something truly special.

**But it doesn't stop there.** We are with you every step of the way and our relationship doesn't end when we hand over the keys. We want to support you as your business evolves, creating partnerships for life.



Peldon Rose,  
Wimbledon

**Working with us is different.**

We blend that human touch with professionalism in everything we do.

We bring together unbridled creativity and innovation with unparalleled expertise.

We combine decades of stable business with energy for the future.

We approach our projects with both logic and love.

Only then can we create the next generation of high-performing workplaces that are a perfect match for your people.



# What our clients say

“The magnificent space and views provided us with the perfect canvas to create a workspace which would be fit for the future. Peldon Rose worked closely with us to understand our concept, brand and values. Our business focuses on long-term sustainability and demands excellence in everything we do. The build was delivered to an incredibly high standard. We are delighted to have a welcoming, practical and contemporary workspace that is fit for the future.”

**Caroline Mair**

Deputy Chief Executive at Veritas Investment Partners

“Thank you for all your hard work and dedication. You have delivered a space that will carry our London team and spirit for many years.”

**Loretta Smith**

Operations at The Trade Desk

“The people who work at ClientEarth do so because they want to take on challenging roles through which they can help others and work to secure a healthy planet. Driven by passion, they work incredibly hard and deserve to do so in a space that they feel comfortable, motivated and inspired. Peldon Rose’s design has surpassed our expectations. Our office proves that sustainable can be stylish and the response from employees has been superb.”

**Karolina Kaczmarek**

Operations Manager at ClientEarth

# Our approach

We want to help create a space that is right for you. Whether that's a new office for your team to adapt and grow or a versatile space to meet the changing needs of future tenants, we've got you covered.

Our expert team are here to support and listen to you at every stage of the project, providing you with a bespoke plan tailored to your needs to ensure we deliver a space that meets your brief and continues to deliver you real value.



Thirty Lighterman,  
King's Cross



# Our services

We are here to help you at every stage of creating a workspace for your team or your tenant.

From understanding how that space should work, through the design and build process, and how it should evolve to fit your changing needs, we have a team of experts under one roof to support you.

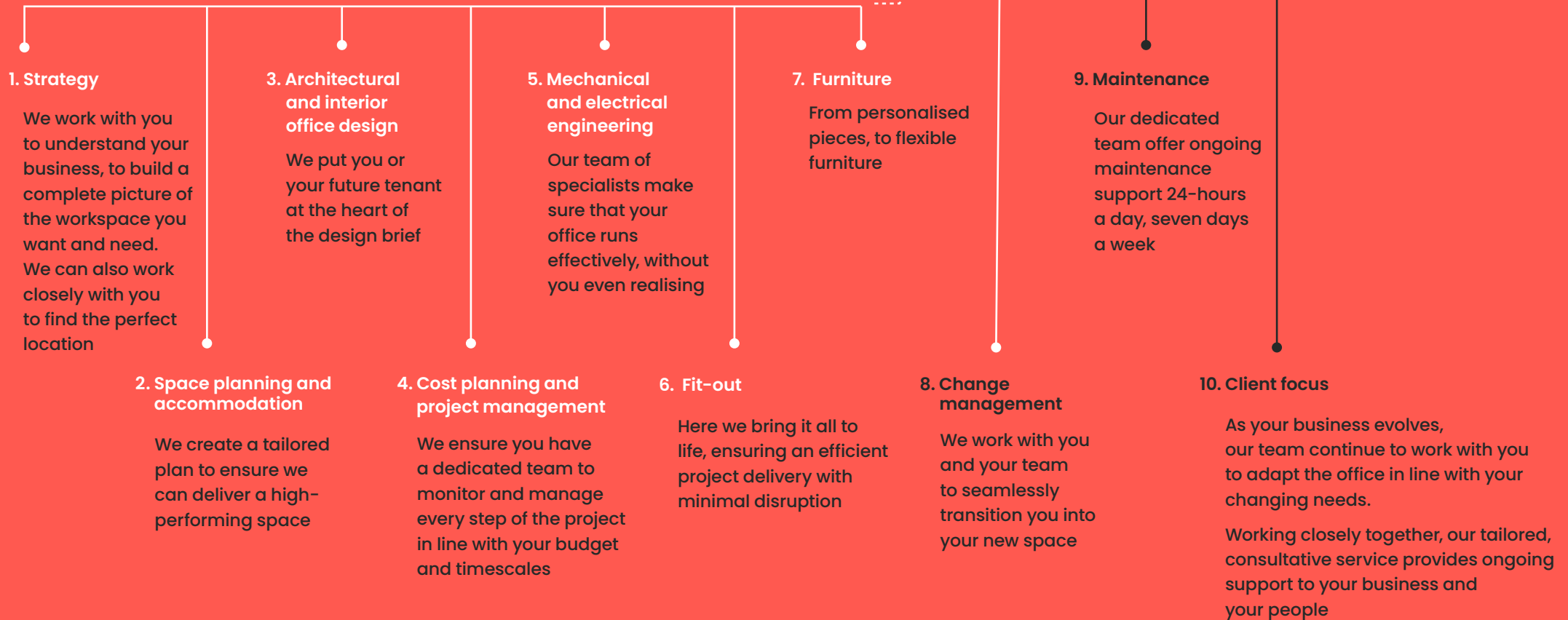


Peldon Rose,  
Wimbledon

# Our services

Realising the potential of the space

## Planning and delivery





# It starts with strategy

**The two greatest costs, and biggest assets, for any organisation are property and people. They need to work well together to realise their potential.**

Our Strategy team works with you to build a complete, accurate and insight-based picture of what space you want and need and what you want it to look like, whether it's in your current space or finding you the perfect building. Then we help show you how that space should function and if it's you moving into that space, how your team can make the most of their new surroundings.

Whether it's a simple refurbishment or a complete relocation for one, or multiple sites, we provide the evidence to support data-driven decisions that maximise and optimise the workspace.



ClientEarth,  
Islington



# Building a space for you and your people

**We want you and your team to love your workplace.**

It needs to adapt and continue to support you as your business evolves. We create these spaces by using the power of design to benefit both your people and your organisation.

Whether you are relocating or refurbishing an existing space, our team of experts consider every element of the design, from the fundamental systems that are operationally critical, right the way through to the finishing touches that make the space uniquely yours.

To help you get a real feel for the space, before we get to work on site, we can bring your project to life through visuals or virtual reality designs. You can sample materials and finishes in our design library and experience first-hand elements such as acoustic solutions with control samples in mock-up rooms.

We know that creating a new office for your team can feel a bit overwhelming at times, and by bringing together a team of experts under one roof we are able to seamlessly guide you through that process. We work with you to create a clear project plan, that works to your budget and your timescale.

Throughout every stage of the project, we talk and listen to you so that the finished product is an ideal fit for your business or organisation.





# A space that works for your tenants

**We know that the pressure on landlords is greater than ever.**

The needs of tenants have changed dramatically in recent months. While many businesses are returning to office spaces, they are re-evaluating what they need and we are here to help you deliver the right solution for them.

Our dedicated Landlord team can help you create a futureproof space which is shaped by current trends, reflects the changing needs of tenants and brings them the latest innovations. Our passionate team are continually adapting our approach in line with the wider industry and use insight-led thinking to design workplaces that will attract and excite your clients.

From building analysis and design, to refurbishment and ready-to-work schemes, we offer a full range of services for landlords and your professional teams.



Thirty Lighterman,  
King's Cross



Laystall Street,  
Clerkenwell

# Client services

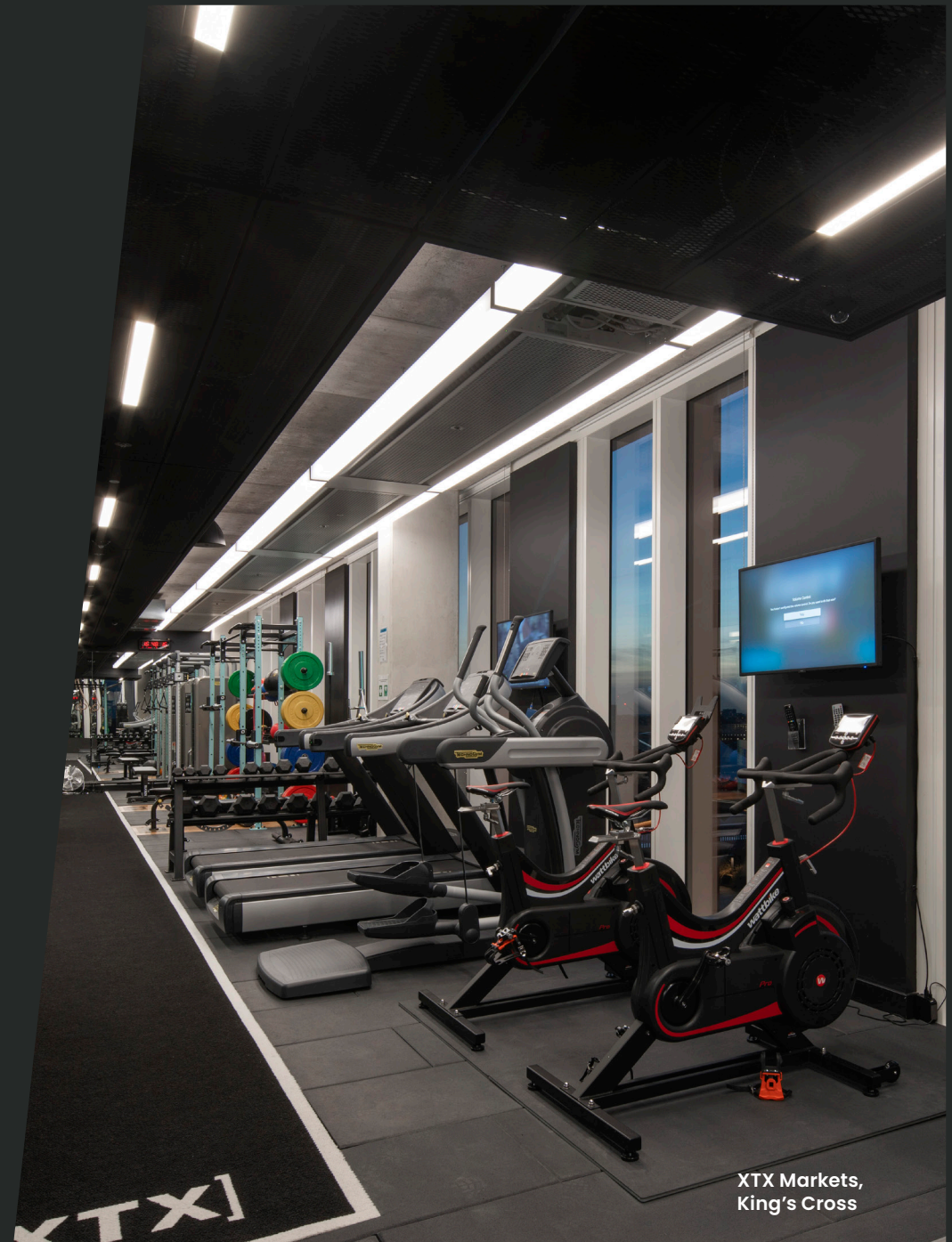
**Our relationship doesn't end when we've handed over the keys.**

**We want to make sure that the workspace continues to perform perfectly and evolves with the team that's using it.**

Our maintenance teams are on hand to carry out planned and preventative maintenance to make sure that building services are running at optimum levels, dramatically reducing the risk of breakdowns. If you need a helping hand, we're available 24-hours a day, seven days a week.

We understand the importance of continuing to adapt to meet your needs. Working alongside our core project team, our Client Focus project managers offer bespoke, ongoing support. Providing a tailored, consultative service, we analyse the best options for your business and workplace. Then we'll seamlessly manage anything from churn projects, to small works and larger workplace alterations.

We give you a dedicated project manager, who will take the time to understand your business as you grow and thrive, and will help you do just that.

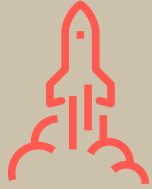


XTX Markets,  
King's Cross



# Our process

01



## Exploration

Here's where we get under the skin of the brief – who you are, what you need and how we can work together.

02



## Preparation

Understanding your building is essential. Then, we finalise the brief and handpick the team to deliver it.

03



## Concept design

It all starts with an idea. You'll receive an outline proposal for a fully integrated design and we'll explore preliminary costs and timelines.

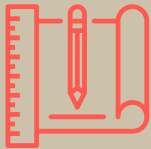
04



## Developed design

Now we're ready to finalise the design, specifications, furniture and finishes. We'll handle the logistics too, ensuring all necessary applications are taken care of.

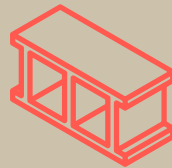
05



## Technical design

Then we interrogate the technical details of the design, guaranteeing your vision will become reality. The details are refined and we prepare for build.

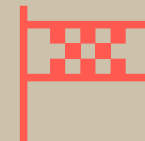
06



## Build

Here's where the vision becomes reality. Your workplace starts to take shape on site under the watchful eye of your project manager and dedicated site team.

07



## Project completion

Our focus is on delivering a high-quality finish. You'll meet our Client Services team who will maintain your space after a seamless handover.

08



## Day two

Once you've settled in, we ensure your people and workspace continue to operate at optimum efficiency. From proactive maintenance to planning for the future, we'll work together as your needs evolve.

Case study

# XTX Markets



Project build



Location

R7 Building, King's  
Cross, N1C 4DN

**15**  
weeks



Size

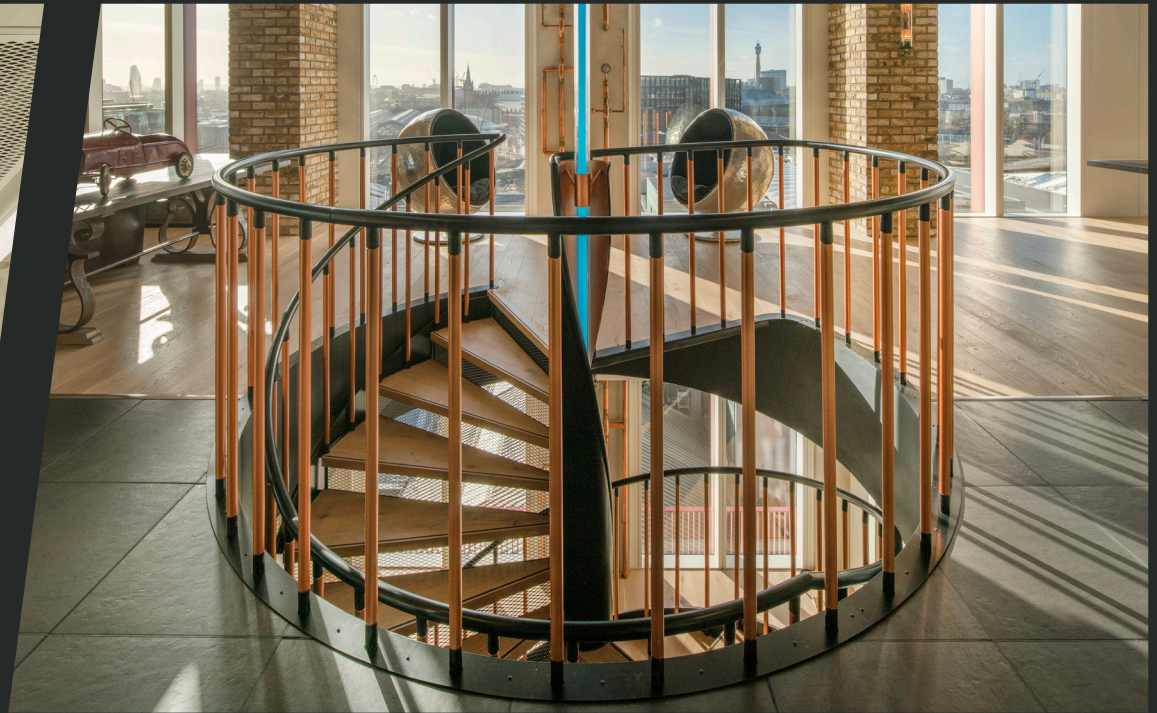
**22,000**  
sq ft

[Click here to find out more](#)



XTX Markets,  
King's Cross







# Case study

# InfraRed Capital Partners



Project build

**14**  
weeks



Location

**One Bartholomew,  
London, EC1A 7HH**



Size

**19,600**  
sq ft

[Click here to find out more](#)



InfraRed Capital Partners,  
Farringdon







Case study

# ClientEarth



Project build

**12**  
weeks



Location

The Joinery,  
Drayton Park, N5 1PB



Size

**10,405**  
sq ft

[Click here to find out more](#)



ClientEarth,  
Islington





Workplace  
Thinkers  
& Makers™

Want to find out more?

Give us a call on

**020 8971 7777**

Send us an email at

**hello@peldonrose.com**

Visit us

**[www.peldonrose.com](http://www.peldonrose.com)**

**Peldon Rose**